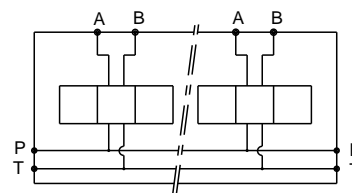


Stations	X	Y	Cast iron (kg)	Alu (kg)
1	70	58	2.10	0.80
2	120	108	3.60	1.40
3	170	158	5.10	2.00
4	220	208	6.60	2.60
5	270	258	8.10	3.20
6	320	308	9.60	3.80
7	370	358	11.10	4.40
8	420	408	12.60	5.00



### Technical specifications

Material : Cast iron EN-GJL-250 \_ Phosphatation  
 : Alu 2017 \_ Anodising  
 Pressure : 300 bar max (Cast iron) - 250 bar max (Alu)  
 Flow rate : 60 L/mn max

Designation code :

**MR - 3 - \* . G**

MECABOR

CETOP 3  
side entry

G : ports BSP

Station number